

Autologlyphs

Self Referential Mathematical Typography

Henry Segerman
henry@segerman.org

University of Texas at Austin

G4G9
March 28th 2010
<http://www.segerman.org>

What is an autoglyph?

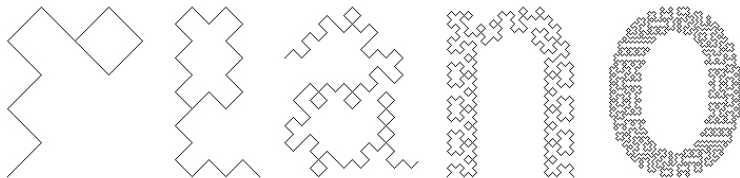
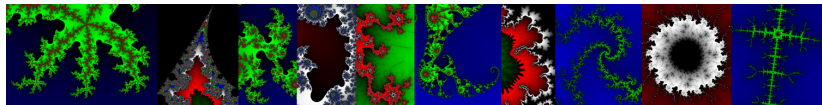
An **autological** word is a word that describes itself, e.g. “English”, “pentasyllabic”.

An **autoglyph** is an image that describes itself (perhaps loosely).

The image shows the word "entropy" rendered in a black, serif font. The letters are solid black, but the background behind the text is a dense, textured field of small black dots. The density of these dots is highest directly behind the letters and gradually fades out as it moves away from the text, creating a visual effect where the word itself is the source of the background texture.

Many are mathematical

CARTEUR



Some are also ambigrams

Rationalas
Rationalas

Antinonignonitry

ମୋଡ଼ିଲୁଠି! ମୋଡ଼ି!



or use similar typography tricks

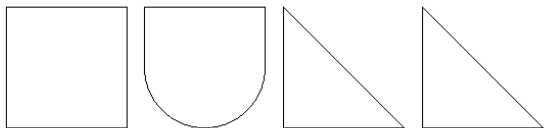
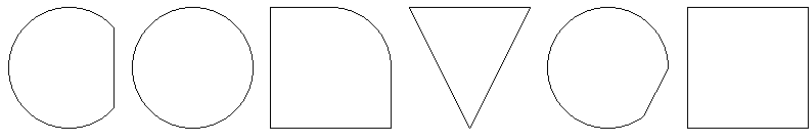
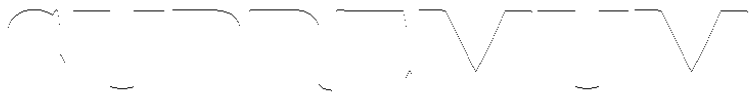


G O L D B = A Z H

F I J K O P Q R S T U V W X Y Z 4 5 5 8 9 1 0

$\int_0^1 2\pi r (1-r^2)^n \approx \pi!$

Some are more like puzzles



.....

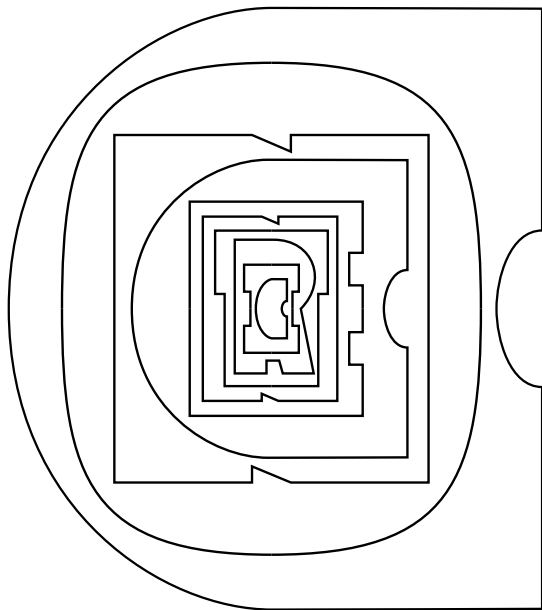
||-|||||

|r|-v|^-<-┘

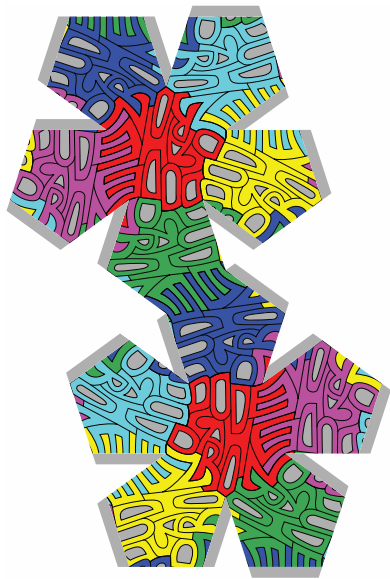
τ<τΓ□∞|∞□<S

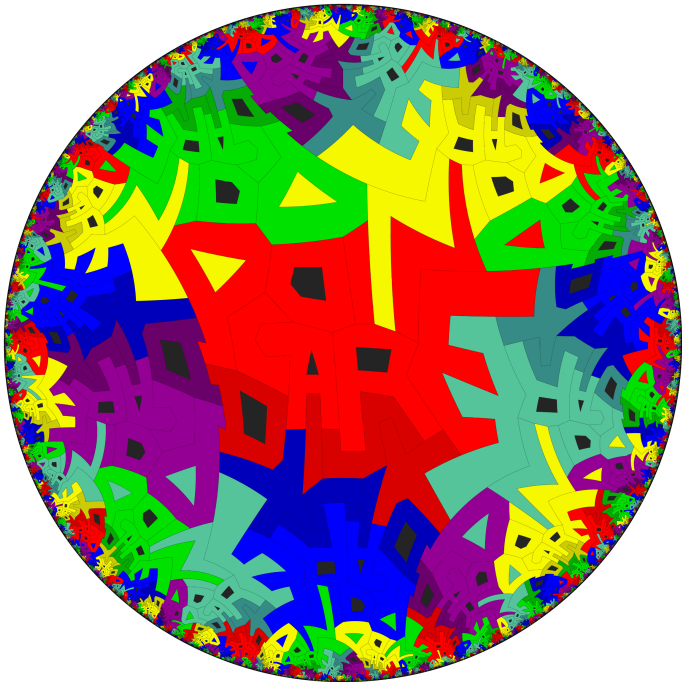
Р<П†+∞|п+РS

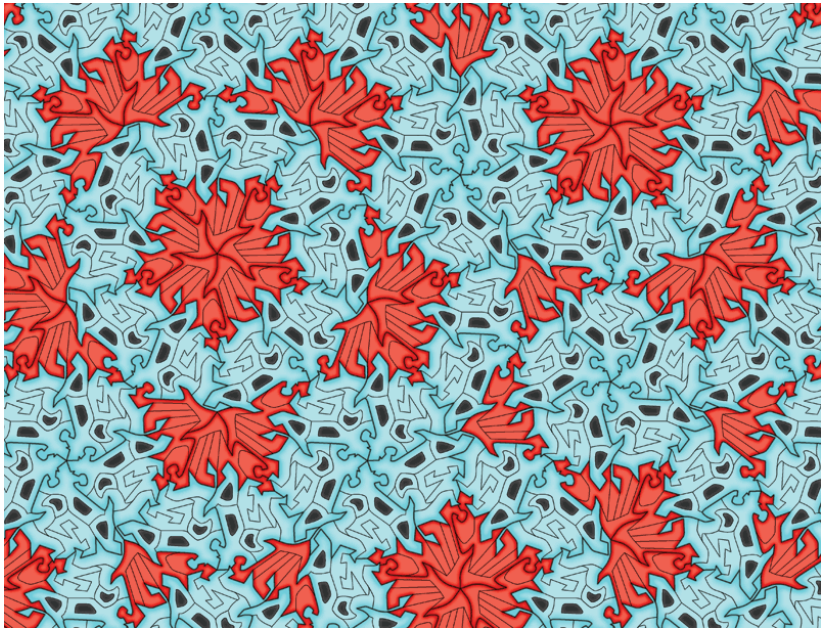
Some are difficult to read

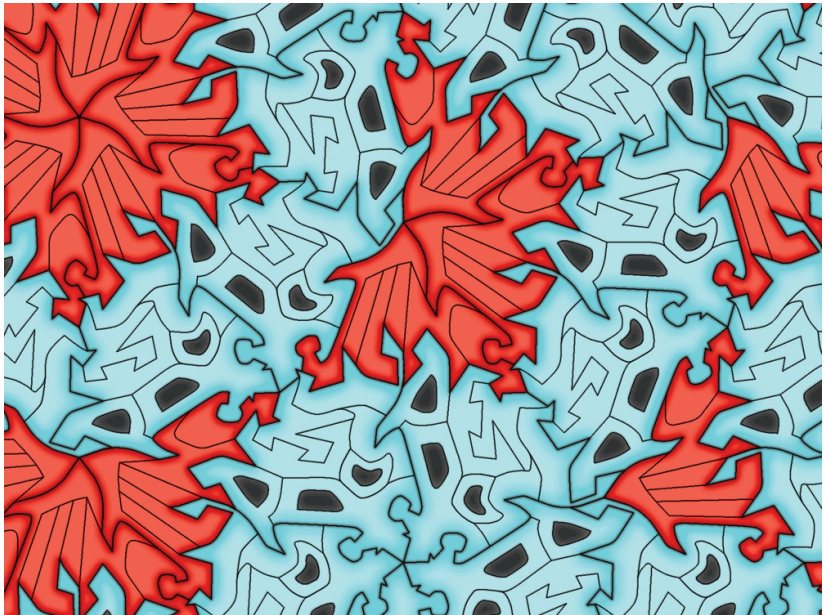


Tessellations sometimes work for polyhedra and other tilings

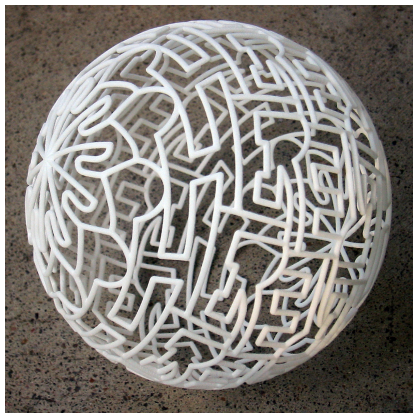








With 3D printing, tiling also works for surfaces



More can be seen at <http://www.segerman.org/autologlyphs.html>

Thanks!

